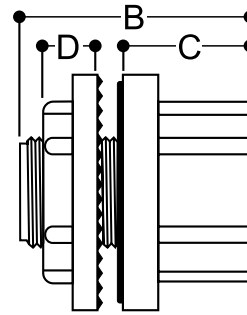
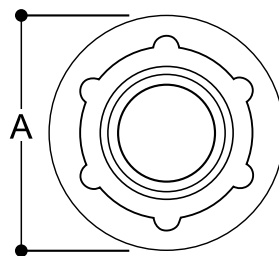
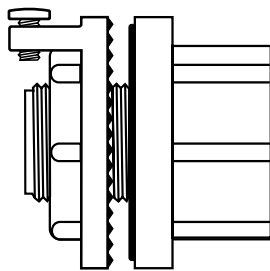


WH Series Watertight Conduit Hubs

Tuff-Seal WH Series Hubs features unique angled serrations that provide a reliable watertight seal even with a rough or oversized knock-out while providing both a larger and tighter surface. Designed with a simple two-piece construction, these hubs offer positive grounding, protective insulated throats and an embedded O-Ring. Hub sizes range from 1/2" to 4", and they are offered in both zinc die cast or chrome-plated. The WH Series Hubs are also available in a grounded style, and are suitable for use with rigid service entrance conduit.



Hub Size	Zinc Die Cast	Grounded	CHROME	A	B	Mtg. Hole (minimum)
1/2"	WH-1	WH-1-G	WH-1-CP	1.54	1.31	.84
3/4"	WH-2	WH-2-G	WH-2-CP	1.73	1.37	1.05
1"	WH-3	WH-3-G	WH-3-CP	2.04	1.59	1.31
1 1/4"	WH-4	WH-4-G	WH-4-CP	2.42	1.59	1.66
1 1/2"	WH-5	WH-5-G	WH-5-CP	2.79	1.59	1.90
2"	WH-6	WH-6-G	WH-6-CP	3.30	1.59	2.37
2 1/2"	WH-7	WH-7-G	WH-7-CP	3.70	2.47	2.88
3"	WH-8	WH-8-G	WH-8-CP	4.39	2.47	3.50
3 1/2"	WH-9		WH-9-CP	4.81	2.69	4.11
4"	WH-10			5.38	2.69	4.63



Suitable for the following locations:

Class I, Div.2

Class II, Div.1&2

Class III, Div.1&2

Per NEC 501-4(B), 502-4(A), 503-3(A)

UL File: E52002 (N)

E157356(N)