

TUFF-FLEX Series Cord Grip Connectors

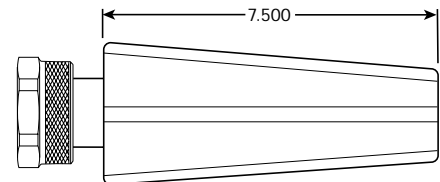
This Tuff-Seal family of cord grips includes the unique TUFF-FLEX connector that eliminates cable pull-out and is designed specifically for severe flexing applications. The design of this connector is superior to others in controlling arc of bend and it minimizes damaging strain on the cable. It is offered in 45° and 90° body styles, accommodates 1-1/4" through 1-1/2" conduit.



Conduit Size	Cable Range	Catalog Number	45 Degree	90 Degree
1 1/4"	.562- .688	TF-411	TF-45411	TF-9411
	.688- .812	TF-413	TF-45413	TF-9413
	.750- .875	TF-414	TF-45414	TF-9414
	.875- 1.000	TF-416	TF-45416	TF-9416
	1.000- 1.125	TF-418	TF-45418	TF-9418
	1.125- 1.250	TF-420	TF-45420	TF-9420
	1.250- 1.375	TF-422	TF-45422	TF-9422
1 1/2"	.562- .688	TF-511	TF-45511	TF-9511
	.688- .812	TF-513	TF-45513	TF-9513
	.750- .875	TF-514	TF-45514	TF-9514
	.875- 1.000	TF-516	TF-45516	TF-9516
	1.000- 1.125	TF-518	TF-45518	TF-9518
	1.125- 1.250	TF-520	TF-45520	TF-9520
	1.250- 1.375	TF-522	TF-45522	TF-9522

TUFF-FLEX with Swivel Cord Grip Connector

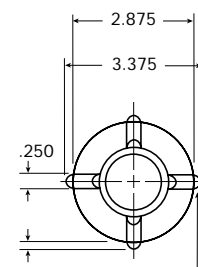
This cord grip offers the features and benefits of the standard swivel-style connectors



Conduit Size	Cable Range	Catalog Number	45 Degree	90 Degree
1 1/4"	.562- .688	TFSV-411	TFSV-45411	TFSV-9411
	.688- .812	TFSV-413	TFSV-45413	TFSV-9413
	.750- .875	TFSV-414	TFSV-45414	TFSV-9414
	.875- 1.000	TFSV-416	TFSV-45416	TFSV-9416
	1.000- 1.125	TFSV-418	TFSV-45418	TFSV-9418
	1.125- 1.250	TFSV-420	TFSV-45420	TFSV-9420
	1.250- 1.375	TFSV-422	TFSV-45422	TFSV-9422
1 1/2"	.562- .688	TFSV-511	TFSV-45511	TFSV-9511
	.688- .812	TFSV-513	TFSV-45513	TFSV-9513
	.750- .875	TFSV-514	TFSV-45514	TFSV-9514
	.875- 1.000	TFSV-516	TFSV-45516	TFSV-9516
	1.000- 1.125	TFSV-518	TFSV-45518	TFSV-9518
	1.125- 1.250	TFSV-520	TFSV-45520	TFSV-9520
	1.250- 1.375	TFSV-522	TFSV-45522	TFSV-9522

Material

Connector: Aluminum
Flex Cone: Type NBR Rubber



.125
NOTE: FOUR RIBS .250 WIDE .125 HIGH 90 DEGREES APART